

Developing Sustainable Communities

Student Task: Year 12

Devised and written by Dugald Ferguson and Cath Catt

CREATING BUSINESSES IN THE COMMUNITY

Aims of this task:

- To show that you can **articulate good and innovative ideas well**
- To show some understanding of **how businesses** should and do **contribute to the communities** in which they are sited
- To show you understand what **people need** in order to **live comfortably together** as **positive neighbours**.
- To show you understand **how ecological considerations** may be addressed to **create a thriving and ecologically responsible business community**
- To show you can **work well** within a **large team** as well as in smaller groups to **achieve whole group goals**

You will succeed if your group supports the best work from within the whole group.

A senior management group (SMG) should be selected; each member could take one of the roles on the role sheet. The SMG's task is to coordinate the whole group's plan for a range of businesses to provide a good economic base for the community. There must be consumer choice, services for the inhabitants of the town and employment for people with a wide range of skills, abilities and interests.

You should consider:

- **Where different businesses and retail outlets** should be **situated within a community** (at least in principle) to **ensure that community needs are met**.
- Ways of **enhancing business operations**
- **Ensuring** the most **ecologically responsible commercial model possible**, minimising **negative impact** from the businesses on **local eco-systems**

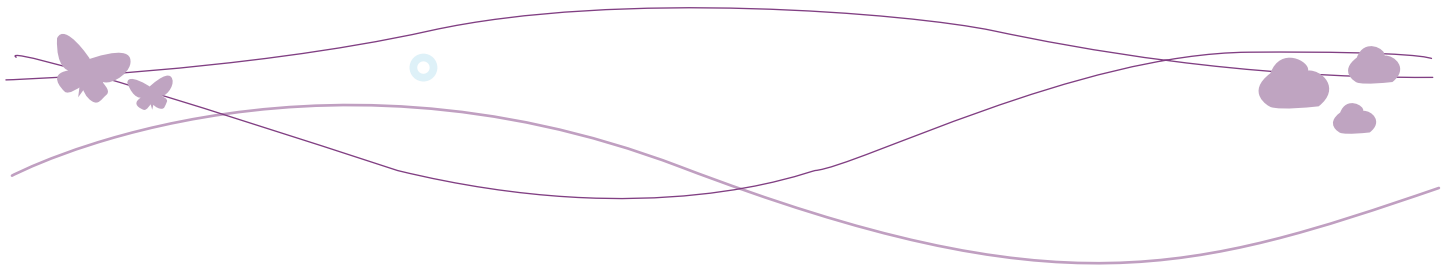
Consider **renewable energy generation sources** to help towards supporting the direct daily needs of a **healthy community**. You should also pay attention to **local government structures** and **public services** which are a vital part of ordering and serving a town.

It is recommended that you refer in-depth to the Arup information materials before and during the task (where appropriate).

Your **submission** will be **judged** on the **following criteria**:

- ✓ **Clear explanation of ideas**
- ✓ **Clear explanation of how you arrived at these ideas**
- ✓ **Innovative approach to incorporating eco-friendly ideas** into the built environment
- ✓ **Consideration of how the built environment affects the social life of communities**
- ✓ **An understanding of climate change issues**





Check lists

To achieve success you should demonstrate you have considered the following:

✓ CRITERIA CHECK LIST

	Innovative ideas that may not exist in communities you know
	The potential negative impacts of this community development on local eco-systems and ways these impacts can be minimised or eliminated altogether
	Energy should be sourced from environmentally friendly and renewable sources; you could consider the wind, solar, biomass and ground source energy generation – or any others you know of, or can discover
	A lot of new building is occurring in low-lying land vulnerable to flooding - what sorts of measures could be taken to help ensure that the inhabitants of your town do not suffer from this?
	People require recreational areas around or near homes for playing, entertaining, building community 'feel' and generally 'hanging out'
	Schools and other public services for all age groups will be needed; what services, how many and where should they be sited in relation to housing?

Your final submission must be in electronic format and could include:

✓ ELECTRONIC SUBMISSIONS CHECK LIST

	Diagrammatic material (e.g. tables, graphs, maps, diagrams)
	Graphics (original photographs or from printed or internet non-copyright sources)
	Written text documents
	Digital photographs of 3D models you have constructed
	Audio or video clips
	Appropriate presentational methods not listed above